



February 2020

A Message from our President



In our December Newsletter, I thanked our departing board members and introduced our new board members. I wanted to give you a little more information on these new folks.

Our new board members are **Merith Cosden**, **Lynn Weber** and **Betty White**.

Merith is taking on Adria Abraham's job of Recording Secretary. Merith is a wonderful abstract artist, working in acrylic, whose pieces have sold from our library shows as well as last year's Stow House Art Festival.

Also coming on board is Lynn Weber as Treasurer. Lynn, a past President for GVAA, is an artist who works in both water color and pastel. Her work has won awards at our library shows. Her piece at SBAA's Holiday show at the Faulkner was the first piece sold on the very day the show opened.

Stepping in to take on the newsletter editing duties is Betty White who is a new member of GVAA. Betty has strong editing skills from previous newsletters she has worked on. She came in with little notice and we are grateful to her for her willingness to take on our newsletter. Betty is also a very talented oil painter who was juried in to GVAA in July 2019.

The format of the newsletter looks different because of this change. With Betty's creative ideas, there will no doubt be other changes to the newsletter over time.

The beginning of a new year is also the time to renew your membership in GVAA. Annual membership dues are \$25 and can be paid by cash or check. A Membership Renewal form is attached to this newsletter. Please send your renewal form and check, made out to GVAA, to P.O. Box 435, Goleta, CA 93116. You can also pay by cash at our critique on January 29th or ingathering on January 31st.

To all GVAA members who have renewed, thank you. To those who haven't yet, we look forward to receiving your renewal soon. We also look forward to another fun, productive year for all GVAA artists.

As 2019 wound down, GVAA members met once again at the Glen Annie Golf Club for our annual Holiday Brunch. Lynn Humphrey, Social Events Coordinator, organized the luncheon which was attended by about 50 of our members. Photos and a nice write up were provided by Lynn and appear further on in the newsletter. Lynn also managed to provide a perfect day, weather wise, for our event. Good job Lynn!!

2020 has such a nice ring to it!

To all GVAA artists: "Here's to a Visionary Year!"

Elizabeth Flanagan

Jurors Awards for January



Rosalie Bier – Allie the Adorable – pastel



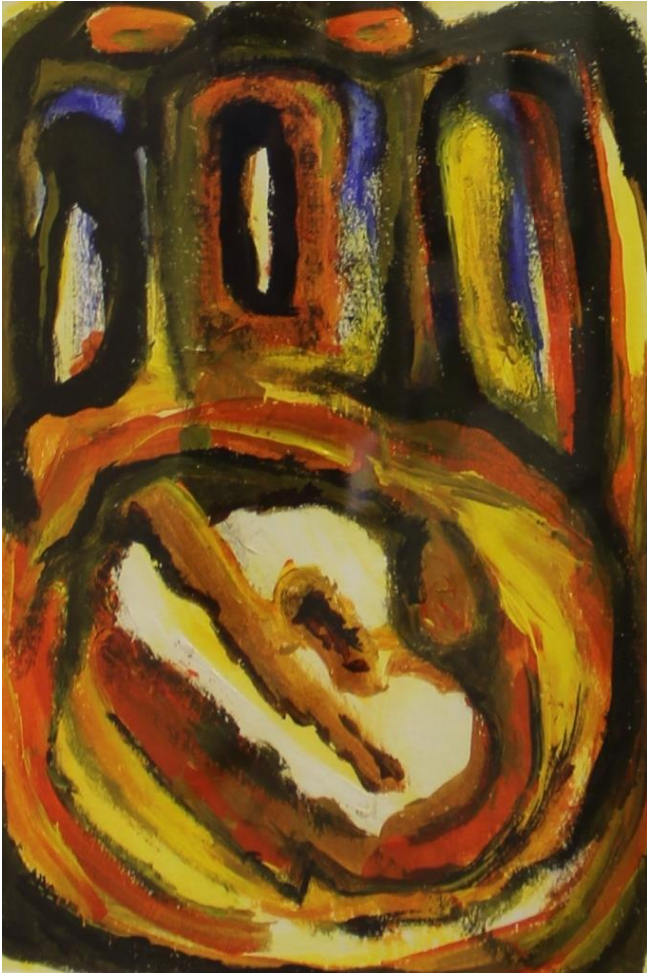
Rick Osgood – Shore Bird in the Seaweed – w/c



Loren Nibble – Genus Boguse - mixed



Ann T. Elliott – Still Life with Polish Teapot – w/c



Adria A. Abraham – Temple Glow - acrylic



Anne Anderson – Ghost Ranch - oil

January Juror: Carissa Luminess

The Juror for GVAA Library Show for February is: Cathy Quiel

Cathy Quiel is a renowned watercolor artist known for her use of vibrant contrast and use of color. She taught at SBCC Adult Ed. for 27 years and has taught numerous workshops in the US and in Europe. She has been the invited presenter at the Muchenthaler and Riverside Art Museums in conjunction with the National Watercolor Society and Watercolor West. Her work has been published in North Light Publishing Art Books, Artist Magazine and Montecito Magazine. Her illustrations in AIRPLANES IN THE GARDEN won the ebook Silver Award for Children's Illustration. Her work is represented at Gallery Los Olivos and she continues to teach workshops at the Carpinteria Arts Center.

Submitted New Works



Artist: Gerry Winant

Title: Eastern Sierra Mining

Medium: Oil, 36 x 48"

My wife, Ann Sanders, and I were driving from Lone Pine to Death Valley hoping for some plein air inspiration. Half-way there we encountered ominous storm clouds coming over the massive bulk of the Eastern Sierra. In their shadows lies a desert utilities station with security fences, a small number of off-road mining vehicles, school buses on blocks, and a small fleet of equipment. I pulled off the road and did an 8x10 plein air sketch. I worked from that to do this studio painting. gerry@gerrywinant.com



Artist: Elizabeth Flanagan

Title: Frida w/a Wry Smile

Medium: Acrylic on paper, 5 x 7

This piece at the Faulkner is entitled "Frida with a Wry Smile" and painted with acrylics on paper. I painted this piece because I am drawn to Frida Kahlo, her art, her lifestyle and her story. Frida continues to be an inspiration for me. This piece is painted in more subdued colors and her head cover is less elaborate than usual. I drew and painted the image over a background of multiple colors.

euflanagan@gmail.com



Artist: Ann Elliott
Title: Misty Mountains
Medium: Oil on panel, 6" x 6"

I lived in Sonoma County and the lovely landscapes changed with the seasons, similar to SB county. When my children left home after graduating from college, they each wanted a visual memory of where they grew up. I painted scenes like this for them, in oil and in watercolor collage.

annelliott@gmail.com

Welcome New Members

Vishal Mane, Suzanne Johnson, Lee Savage and Ivania Finsvik

APPLICATION FOR MEMBERSHIP IN SBAA Monday March TBA from 10 – 12 in the Faulkner Gallery. Go to www.sbartassoc.org to see details on How to Join under Home and click under How to Join. They do not have a date listed as of this publication date.

Event: Holiday Party

GVAA artists, friends, spouses and significant others enjoyed a sumptuous brunch at Glen Annie Golf Club on December 14th. The weather was perfect and allowed for al fresco dining! We indulged in salmon, eggs with Hollandaise sauce, salads, muffins, pastries and beverages. And bacon, ah yes, there was bacon! Many GVAA artists contributed art gifts for the children at Transition House. These will be delivered to the children before Christmas.

We had special guests this year including Jacqui Bravo from SBAA. Jacqui has been generous with her time and talents during the past year and we were delighted that she was able to join us. Also joining us were Mariah Reeves and her boyfriend, Garrett. Mariah is a student at SBCC majoring in art history. Earlier this year she began volunteering at ingatherings and Picassos for Peanuts. She has been a great help and we appreciate her energy and joyful spirit!

The day was capped off with a special presentation as President Elizabeth Flanagan announced that Janet Hart is the recipient of GVAA's "Volunteer of the Year" award. The board recognized Janet for her many years of volunteering as our "Sunshine Girl" and her work at ingatherings and other venues where help has been needed. Janet's ready smile and "let's get it done" attitude is so appreciated by the board. Congratulations Janet!



We look forward to seeing you all at next year's Holiday Brunch!

Submitted by: [Lynn Humphrey](#)

GVA Library Schedule for 2020

Please mark your calendars.

Ingatherings are 10:30-1 pm and Critiques are 6:15-8 pm

January 3 - Ingathering

January 29 - Critique/take down

January 31 - Ingathering

February 26 - Critique/take down

May 29 - Ingathering

June 24 - Critique/take down

June 26 - Ingathering

July 29 - Critique/takedown

July 31 - Ingathering

August 26 - Critique/take down

August 28 - Ingathering

September 30 - Critique/take down

October 30 - Ingathering

December 2 - Critique/take down

December 4 - Ingathering for Picassos 4 Peanuts

January 8 - Take down

Workshops – Classes - Events

Event: **Artistic Exploration**

Location: **Skip Lawrence Santa Barbara Workshop**

Dates: **February 10 – 14 AND February 17 - 21**

Notes: These once a year workshops are open to all 2D media. Due to a last minute cancellation there is now a space available for either, or both the February 10-14 or 17-21 week to study with this renowned teacher. Call or email ruth@ruthellenhoag.com or call 805-689-0858 for more information.

Skip Lawrence's paintings will be featured at Gray Space Gallery, 219 Gray Avenue, from January 17 thru February 23, 2020.

Event: **Ruth Armitage April Workshop, titled Land Lines**

Location: **Gray Space Gallery or CAW (depending on size)**

Date: **April 24 - 26**

Time: **Friday through Sunday, 9am – 3:30 pm**

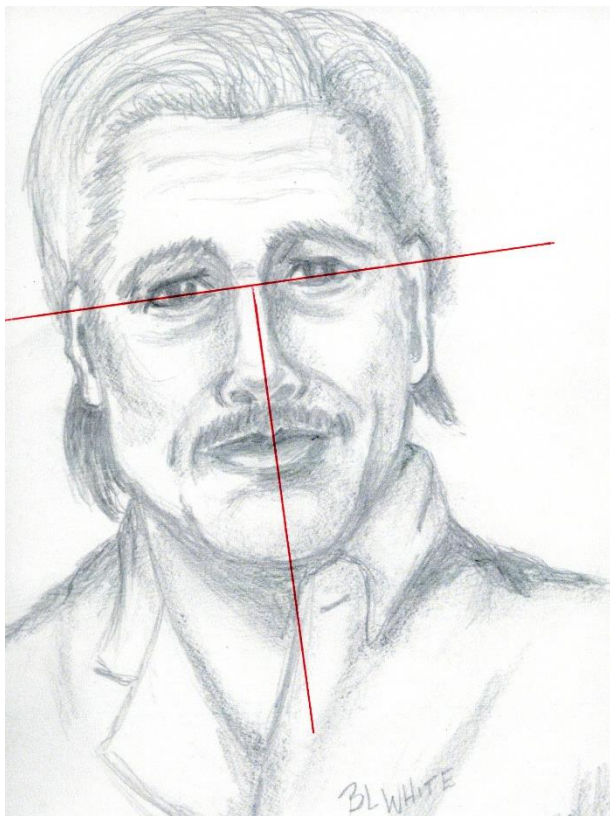
Popular workshop teacher, Ruth Armitage of Portland Oregon will be presenting her fourth workshop in Santa Barbara, titled *Land Lines*: an exploration of personal mark-making inspired by the landscape. Ruth will employ a coaching model rather than demonstration to encourage individuality and creativity. You'll delve into working on a large format (22x30") with both gestural and more controlled strokes. Our lines, dots, patterns and textures will convey our feelings of place more potently than realistic rendering. Experiment with using script, repetition, direction, layering and much more. Walk away with a new visual vocabulary. Call or email Ruth Ellen Hoag: 805-689- 0858; Ruth@ruthellenhoag.com.

Event: Travel to Limoux, France with Ruth Ellen Hoag
Location: France
Date: June 27 – July 11

This workshop has recently changed dates from October 2020 to June 27 – July 11. With this change, the hosts have offered a price break that makes this an even better, can't pass it up, deal. There are two spaces available for this fabulous trip! For details, call or email Ruth Ellen Hoag to be included. 805-689-0858; Ruth@ruthellenhoag.com.

Tips and Techniques

Members are invited to submit/share your painting tips and techniques to our News Letter for publication in future editions. Email your tips to: blnllwhite@aol.com.



Easier Way to Draw Portraits

Most people were taught to draw an egg and place your features to fit the egg. For me, this way is easier and looks more like the subject. By drawing your “T” at the angle your model or photo is at, you can first draw your eyes and bridge of your nose, measure your eyes to the length on your face, you can use this as a guide. It is easier to make the person look like your subject as you draw in the nose, mouth and bottom of the chin. After you get all the appropriate features, and it looks like your model, you can move to adding the ears, sides of your face, hair line, and shading. I find if you have the eyes correct, and they are looking at you it is easier to finish your portrait.....they are watching you. If you are doing this in paint, make your corrections in red, as it blends well with skin tone. You do not want to remove an eye, nose, etc. because you will inevitably draw the same mistake over but, by correcting in red you see your mistakes.

Submitted by **Betty White**

GVAAs After School Art Program

School has just started back after the holidays. Watch for more exciting information in the March News Letter. Contact Judy Edmondson edmondso@sbceo.org.

Congratulations: Awards, Galleries, Exhibits, Sales

AWARDS

January People's Choice Awards will be announced in March's issue due to deadlines.

GALLERIES

How do I get into a Gallery? You can belong to GVAA and the Santa Barbara Art Association where your work is juried into shows. The SBAA members can hang in Gallery 113 and in juried shows at the Faulkner. Check out the websites: GVAA: www.tgvaa.org and for SBAA www.sbartassoc.org.

Source: **Elizabeth Flanagan**

You could hire an Agent or research galleries that hang your type of work. *Do NOT walk in with works in hand.* Go to the Gallery's website where they will tell you how to submit your work. Provide all the information requested and submit photos of your work. Galleries usually charge to hang in their Gallery.

Source: **Waterhouse Gallery**

Paula Gregoire-Jones is one of the local artists showing her mosaic, stained glass and jewelry pieces at a new gallery in Los Alamos. The Los Alamos Local Artisans Enterprise is located in the T&T building at 515 Bell Street. The Local Artisans Enterprise is committed to showcasing the wide variety of mediums our talented, dedicated, local artists have to offer. For information on renting a space in the gallery contact the gallery manager, Adria at LAEGALLERY@gmail.com. Current hours are Thursday through Monday, 10am to 6pm.

Ann Sanders is contracted exclusively with Waterhouse Galleries. Her pictures are currently hanging.

Ann Elliott is now one of 24 artists in the 3 newly formed studios at La Cumbre Center for Arts (LCCCA). We are in our third month of operation and have received a positive reception from the community and from folks from city council. Please come and visit us if you have not already. If you are interested in possibly joining the collective, there are cards available with information on how to submit your work.

Elizabeth U. Flanagan has one piece in the show with the Goleta Valley Art Association at the Goleta Valley Library and one piece at the Faulkner Gallery with SBAA's show.



LCCCumbre Galleries has an opening now and possibly one in the future. If anyone is interested, please contact **Irene Estrin** at 805 453-8701 or email Iryney2@gmail.com

Interested in becoming a **LCCCA Member**?

Please complete an online SUBMISSIONS form at:

lcccamembers.com

Thank You!

LCCCA Members

EXHIBITS

CALL for Entries: Art Show at the S.B. International Orchid Show is *Open to All Artists*. Go to : www.sborchidshow.com for details (under the Registration/Application tab, select Artwork & Photography exhibit and then be sure to read the pdf on Art & Photography exhibitor rules). Enter online by February 28 to avoid a late fee at the ingathering on **Wednesday, March 11, 10 - 1**. Juror TBA but all entries must include an Orchid, the theme of the show. Takedown is Sunday, March 15 from 5:15 - 6. Entries are limited to 38 inches in any direction and must be wired.

Ruth Petersen Shorer has an exhibit installed at the Oakland Chamber of Commerce as you walk up the stairs from the 12th Street BART station in the window 1333 Broadway Suite P100, Oakland, CA 94612 January 6- Feb. 29 or later. She also has paintings at the Marin Museum of Contemporary Art in Novato, CA.

Pamela Benham's acrylic painting **Up Against It** is in the exhibition **Miniatures: Big ART in Small Packages** at the Monmouth Museum, Lincroft, New Jersey from January 18th to March 15th.



Artist: Pamela Benham

Title: Up Against It

Medium: Acrylic on paper on canvas 10 x 10"

RECENT SALES

Ann Elliott sold 3 oils at the Carpinteria Art Center and 2 water media paintings at La Cumbre Center for Arts.

Terre Martin Sanitate sold two of her paintings (Blossomful II and Inquiry II) at the Santa Barbara Art Association Holiday Show.



Artist: Terre Martin Sanitate

Title: Inquiry II

Medium: Acrylic, 12 x 12

Inquiry II is an abstract expression of sensuality. The lush crimson swirling through the painting meets up with the iridescent gold in unexpected ways.

terre.sanitate@gmail.com

MISCELLANEOUS

Brand new, never used, point driver (frame tacker) for sale. Sells for about \$100.00, and will sell for \$25.00. It's great for someone who does their own framing. Judi Doernberg Judidoern@gmail.com

Holly Hungett is happy to announce the opening of her new ETSY Store front (on-line store) featuring her original art inspired clothing line. Holly has sold over 25 pairs since October 2019. Leggings for lounging, leisure and exercise are available, kids and plus sizes too! All have leggings a UV protection of 38-40. Tee shirts and shorts are also available. New items are created and added all the time. 10% off is offered for GVAA members through APRIL 30, 2020.

(Use GVAA10 during check out).

<https://www.etsy.com/shop/HAHARTSTUDIO>



Goleta Valley Art Association

Membership Renewal 2020

The Goleta Valley Art Association is an all-volunteer, non-profit organization, which depends upon the willing participation of all our members.

Please check off your interests and skills below to show ways in which you can help GVAA. Feel free to write in any relevant skills not listed below. Thank you!

Ingathering's/Shows

Ingathering

Hanging

Membership

Cashiering

Outdoor shows

Juror Selection

Publicity

Graphic Design

Brochures/Flyers

Photography

Marketing

Press contacts

Technology

Website

Database/e-lists

Newsletter

Education

Workshops

Field trips

Receptions

Please share any comments and suggestions.

Please provide a brief biographical sketch. (Continue on reverse as needed.)

Please renew my membership. A check for my dues is attached.

Name _____ Date _____

Address _____ City/State/Zip _____

Phone(s) _____

Email _____ Website _____

Dues are \$25/year, payable by Feb. 28 to retain membership and to be included in our directory. Dues are pro-rated to \$15 for new members joining after Aug. 1.

Make check payable to "GVAA" and mail to: GVAA, P.O. Box 435, Goleta, CA 93116.